

KPH Manufacturing Co.,Ltd.



**COMPANY
PROFILE**



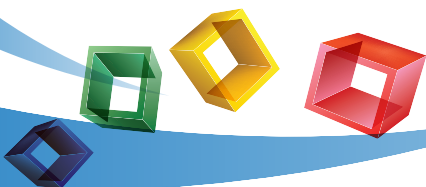
CORPORATE VIEWPOINT





INDEX

- * **CORPORATE VIEWPOINT**
- * **INDEX**
- * **ABOUT US**
- * **OUR DIRECTOR BOARD**
- * **VISION**
- * **MISSION**
- * **VALUE**
- * **QUALITY CONTROL & ASSURANCE**
- * **PROFILE DETAILS**
- * **FACTORY LAYOUT**
- * **LOCATION & IMPORTANT ESTABLISHMENT**
- * **COMPLIANCE AUDIT**
- * **WORKPLACE ENVIRONMENT**
- * **PRODUCT & BRANDS**
- * **PRODUCTION INFORMATIONS**
- * **SERVICES & FACILITIES**
- * **MACHINERY IN PLANT & LIST OF MACHINERY**
- * **Our FREIGHT FORWARDERS ,TESTIN LABS ,
CURIER SERVICE PROVIDERS.**





ABOUT US



20 Years
of Manufacturing Experience

We are The Manufacturing and exporter of clothing to international market base on CMP System since 1999.

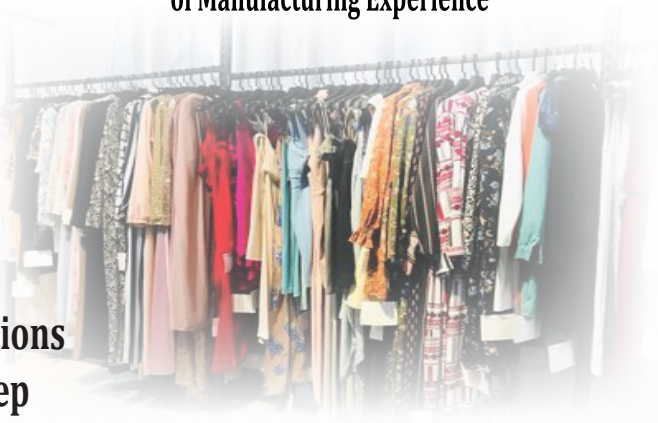
which has passed over 20 years of accomplishment, aiming to lead the competitive Cloth wear organizations in Myanmar. It has arduously re-engineered each step of its value chain to match the dynamism of the market.

The Product was mainly exported to Europe ,Korea & Japan market over the past decades.

KPH has expanded its capacity, developed a skilled workforce and introduced integrated technologies, to remain globally up-to-date.

Today KPH has grown in strength and stature through a series of acquisition of knowledge and technique is leading Garment manufacturing in myanmar as locally own company.

It is truly an organization with a glorious past and a bright future.





OUR DIRECTOR BOARD



Mr Zaw Lin Latt
Managing Director



Mrs Thu Zar Han
Executive Director



Mr Myo Chit San
Director



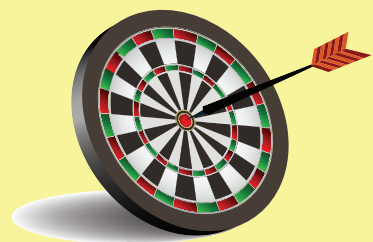
* *Vision*

Our Vision is to serve our customers with Dedication and offer Specialized services with Quality Assurance. We are Quality Driven Organization and content to render quality services and products to our clients. Our Team of Manufacturing Process to ensure that the products are flawless.



* *Mission*

We are the Company That Manufactures apperal products of high quality for the societies of the world that wish to enhance their living standard.



"...Ask and you'll get; Seek and you'll find; Knock and the door will open." ~ Luke 11:8-10



DREAM BIG!!!





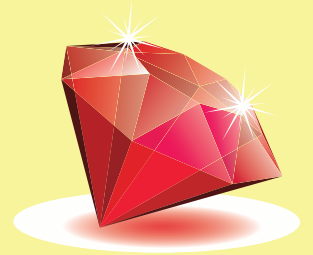
** Our Values*

QUALITY : *We deliver the agreed Quality Every time.*

RELATIONS : *Our Success is Base on good relations with All Our Customers and Colleagues.
We Belive That Expectations and that undustanding is a prerequisite For Real Value Creations.*

FOCUS : *We keep the Focus on creating value for our Customers and for the group as a whole.*

SOLUTIONS : *Continues engineering to provide solutions for our Customers.*



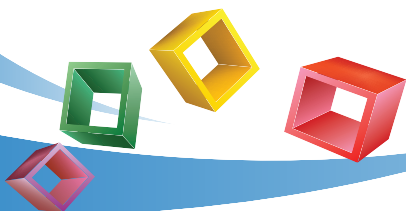


QUALITY CONTROL & ASSURANCE



Throughout its short period of operation, KPH Garment has perfected its Quality Control System, which includes scrupulous checks, to ensure flawless production. The experienced Quality-Assurance (QA) team extends its operation even into the procurement of raw-materials and machinery. KPH, has continuously restructured this system, it has acquired the latest Quality-Control equipment, and developed quality-consciousness among the workforce. Due to its firm grip on quality regulations, KPH Garment can meet the best AQL requirements of clients.

at KPH Garment, client satisfaction is company-satisfaction.





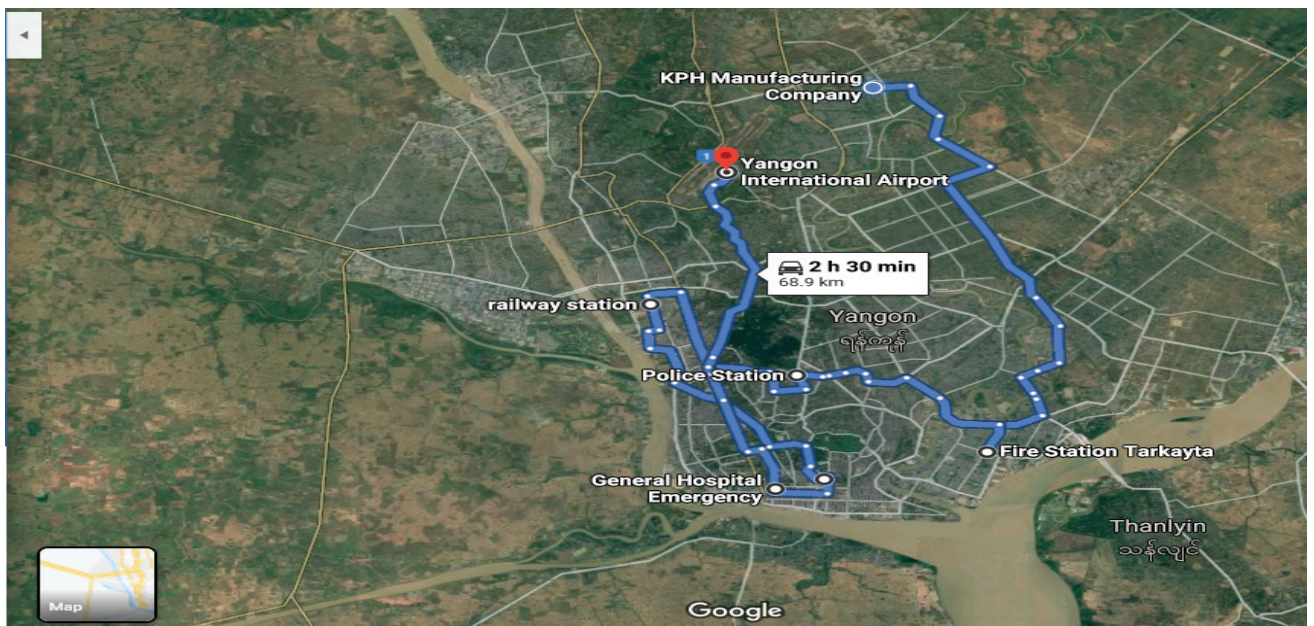
PROFILE DETAILS






| | |
|----------------------------------|---|
| Company Registered Name | KPH Manufacturing Co.,Ltd. |
| Year of Establishment | 2012 |
| Company Type | 100 % Myanmar Investment |
| Oversea Office | KPH Manufacturing Pte.,Ltd(Singapore) |
| Product Type | Jacket /Pants/Blouses /Skirts |
| Market | Europe / Japan /Korea |
| Factory Area | Land Area - 10926 Sqm Production Area - 6030 Sqm |
| Sale System | CMP / CMPT |
| Employee | 1000 -1100 |
| Number of Lines | 12-14 Sewing Lines |
| Capacity Per Month | 125000 -175000 Pcs (Jackets) 200000 -300000 Pcs (Pants) 300000 -450000 Pcs (Blouses) |
| Correspondent information | No 7 + 8, Innwa Street, Shwe Pauk Kan Industrial Zone,Yangon, Myanmar. Ph: (+95) 1695423 , (+95) 1696035 |
| Contact Person | Mr. Zaw Linn Latt (MD) Ph : (+95) 943191877 Mr. Myo Chit San Ph : (+95) 973073747 |



*** Google Map for important Place ***

Located in KPH Garment to AirPort 68.9 Km



| | | | | |
|----|-----------------|---|---------|-----------|
| 1. | Fire Station |  | 26.7 km | 56 Min |
| 2. | Hospital |  | 58.2 km | 2h 17 Min |
| 3. | Police Station |  | 35.3 km | 1h 16 Min |
| 4. | Railway Station |  | 44.2 km | 1h 41 Min |
| 5. | Bus Stand |  | 55.6 km | 2 h 9 Min |



*** Compliance Audit ***





work place Environment

As a Responsible apparel producer, KPH Garment provides employees a work environment high above the law-required level. KPH, installed and has updated lighting, ventilation and ergonomics of its plants using latest technologies

The goal is to exceed requirements of local legislation and reach the global standards, and there by support clients' images and sourcing principles.

Clearly demarcated emergency routes & exits, smoke & fire detectors, consciously designed working lay-outs ensure a safe workplace for workers. As per Audit requirements, instructions and warning signs are posted in highly visible places,



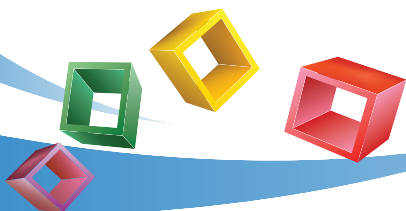
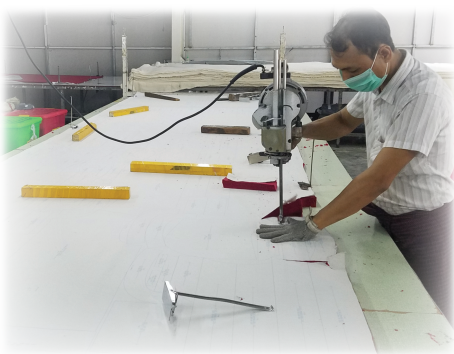


work place Environment



Moreover, usage of metal gloves in times of fabric cutting, needle guard in time of sewing and such similar procedures reduces significantly work-related accidents.

Besides being safe, KPH Manufacturing Co.,Ltd., workplace offers a congenial & supporting environment for all managerial staffs and workers work in mutual cooperation and respect.





KPH Manufacturing Co.,Ltd.

*** Products & Brands ***

NEW LOOK



REWARD **NKD**


BESTSELLER®

next

NEWYORKER
Dress for the moment.

PACIFIC MERCHANTS

SOULCAL & CO
CALIFORNIA
1922

OVS


McKINLEY®

M&Co

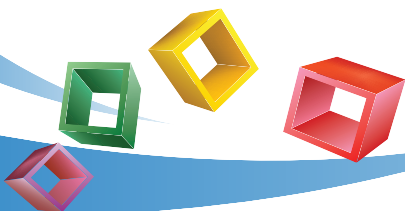




PRODUCTS

**We make the Quality
PRODUCTS**

WINTER WEARS

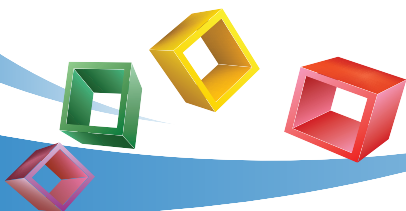




PRODUCTS

**We make the Quality
PRODUCTS**

LIGHT WEARS

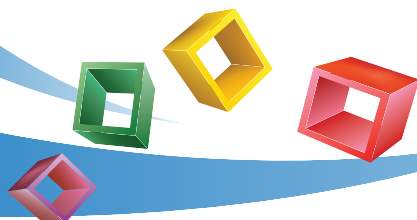




PRODUCTS

**We make the Quality
PRODUCTS**

PANTS

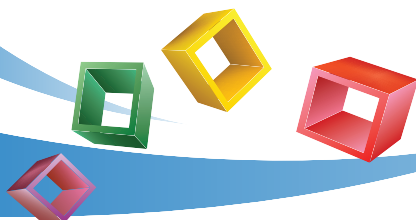




PRODUCTS

**We make the Quality
PRODUCTS**

SKIRTS & BLOUSES



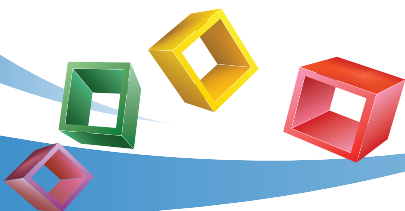


*** WAREHOUSE DEPARTMENT ***

Fabric Store With Raw Material



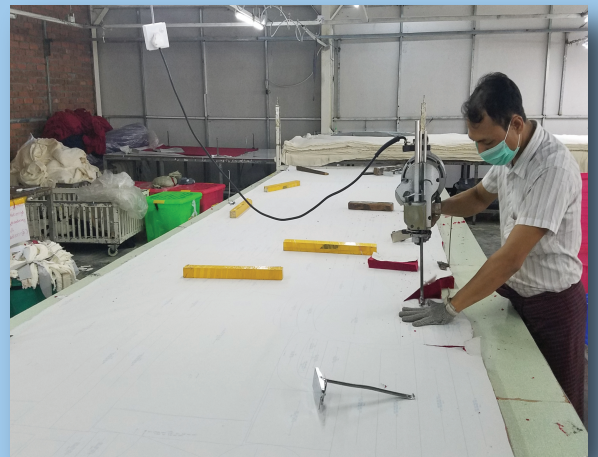
Fabric inspection



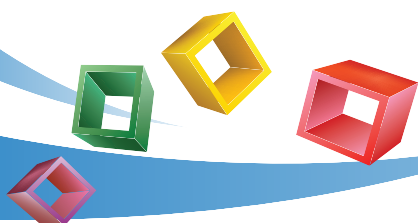


*** CUTTING DEPARTMENT ***

Fabric Cutting

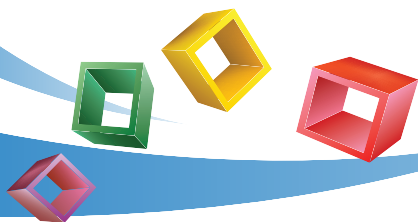


Fabric Spreading





*** SEWING DEPARTMENT ***

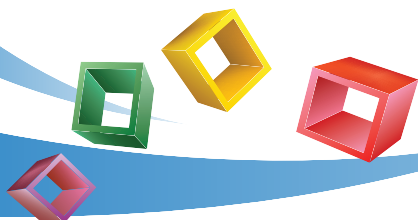




PRODUCTION INFORMATIONS

✧ AUTOMATIC TEMPLATE SEWING DEPARTMENT ✧

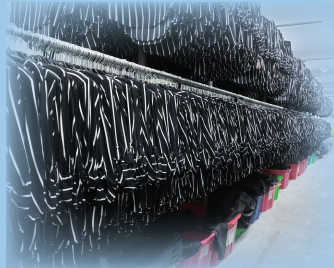
We have a well Equipped Production unit, which is backed by Hi-Tech Machines and state of the art technology. Our Infrastructure is backed by excellence manufacturing and processing facility that help us strengthen our quality standards and ensure on-time delivery.





* FINISHING DEPARTMENT *

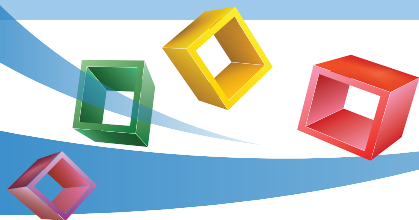
Humidity Control Room



Poly Bag / Packing

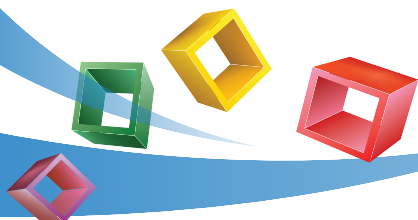


Finished Carton Storage Area





*** QUALITY DEPARTMENT ***





OUR SERVICE FACILITIES

*** SAMPLE DEPARTMENT ***



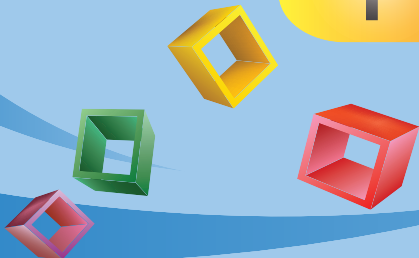
Q uality

F lexibility

O ntime Dilivery

C ompetitive Price

P roduit Safety





OUR SERVICE FACILITIES

✱ CAD DEPARTMENT ✱

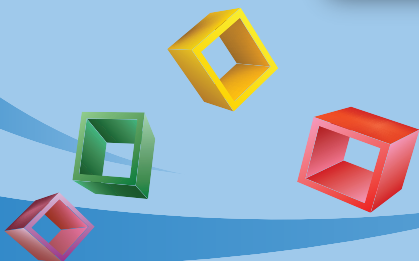
Plotter Machine



Computer Template Cutter Machine



Computer-aided design and marker





*** MACHINERY IN PLANT ***

JUKI®

brother®

**KANSAI
SPECIAL**

 **HASHIMA**

 **PEGASUS®**

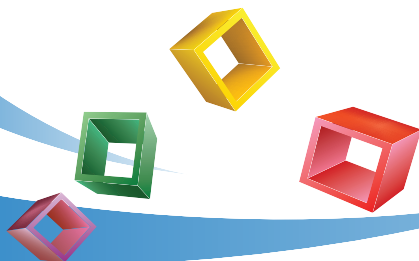
JACK

ZOJE

DUMA

BOK

 **JUITA®**





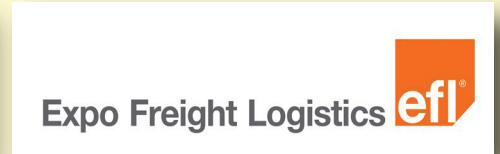
* List of Machine *

| Machine Type | Quantity |
|-----------------------------|-----------------|
| Single Needle (Auto) | 541 |
| Single Needle (Manual) | 167 |
| Single Needle Chain Machine | 1 |
| Two Needle Lock Stitch | 43 |
| Over Lock: 4 – Thread | 59 |
| Over Lock: 5 – Thread | 54 |
| Bar tack | 16 |
| Blind Stitch | 6 |
| Button Attach | 7 |
| Buttonhole | 7 |
| Feed of the Arm | 5 |
| Flat Lock Mini Cylinder Bed | 4 |
| Flat Lock Hem Cutter | 4 |
| Flat Lock | 14 |
| Kansai M/N W/B M/C | 10 |
| Keyhole Machine | 1 |
| Label Attach Machine | 2 |
| Piping Cutter Machine | 25 |
| Long Head Machine (Manual) | 47 |
| Long Head Machine (Auto) | 25 |
| Snap Button Press M/C | 11 |
| TOTAL Machinery | 1049 Pcs |





Our Freight Forwarders:

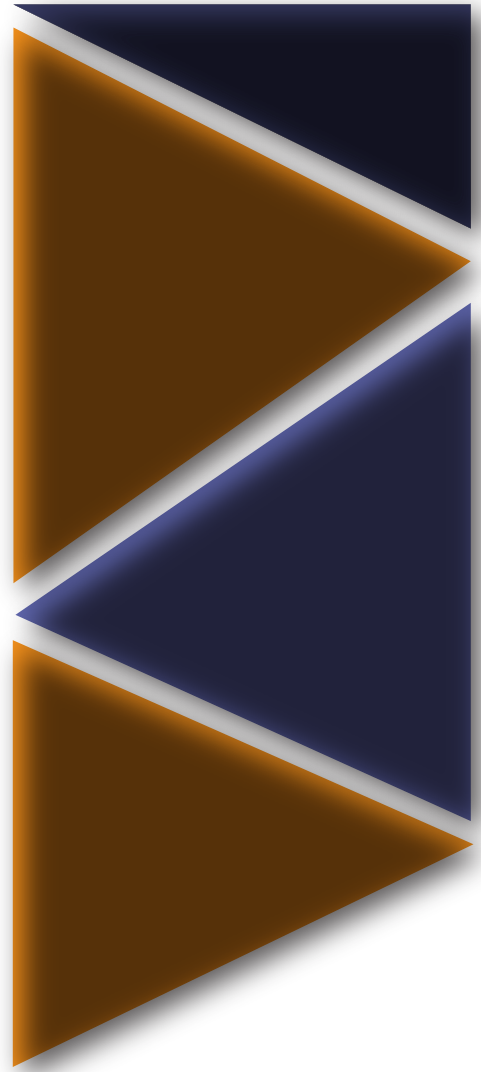
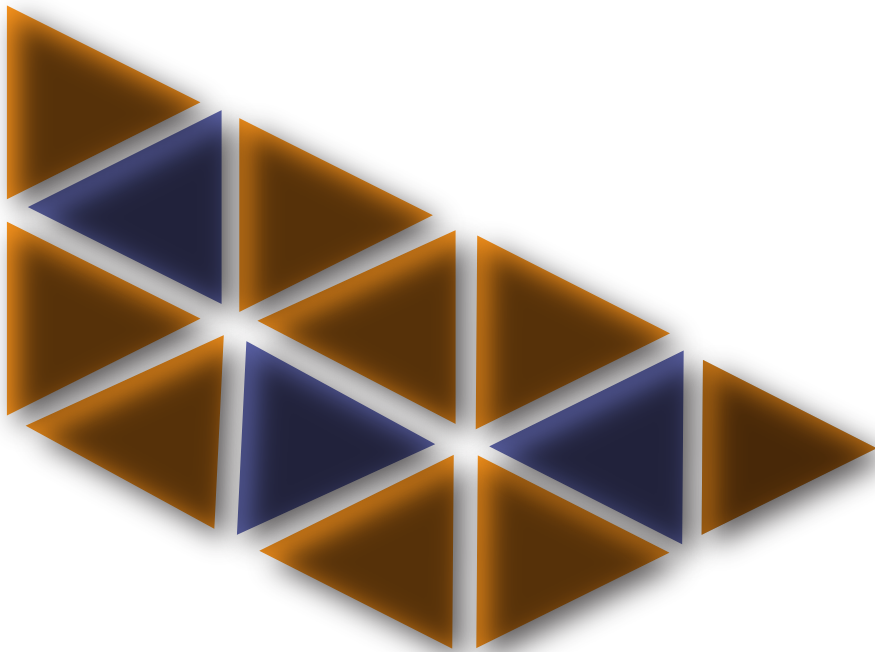


Our Testing Labs and 3rd. Party Partners:



Our Courier Service Provider:





Thanks, You for Visiting KPH Manufacturing Co.,Ltd. Our Inquiries and Comments are greatly welcomed and will Be Responded to in a Timely Manner.

KPH Manufacturing Co.,Ltd.

*No: 7 +8 ,Innwa Street,Shwe Pauk Kan,
Industrial Zone,Yangon,Myanmar.*

Ph:  (95) 1695423 , (95) 1696035

E-mail :aungsigarment@gmail.com

www.kphmfgcoltd-garmentfactory.com.mm